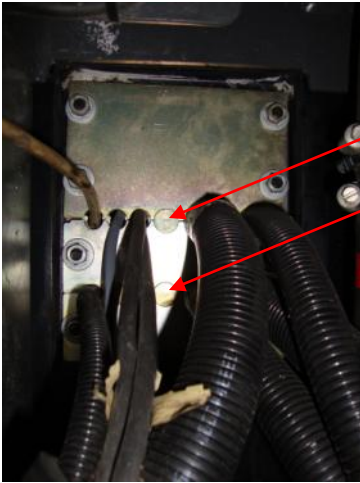


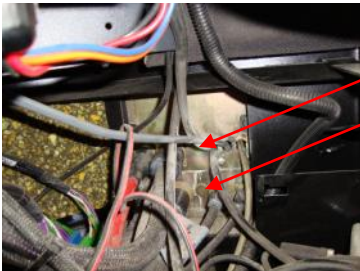
## 1) Installing Feed-thru Plugs

Exterior View

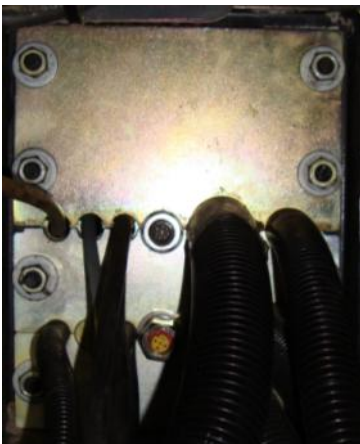


- 1) The first step is to remove the 2 medium sized plugs from the cable feed-thru port on the back of the cab. Once the 2 plugs are removed the plates can be put back into place and tightened down.
- 2) Inside the cab you will need to lift the control arm to locate the electric cabinet below it. Remove the lid to the electric cabinet. The cable feed-thru port is located in the rear of the cabinet.
- 3) Locate the 2 feed-thru plugs provided in the kit. It will take two people to install the feed-thru (10 minute process). The yellow 5-pin feed-thru needs to be run from the exterior into the cab. And the black 8-pin feed-thru needs to run from the cab out to the exterior.
- 4) Carefully tighten the feed-thru's.
- 5) Attach the splitter to the yellow 5-pin.
- 6) Secure the protective caps provided for the exterior connections.

Interior View



Feed Thru's installed



## 2) Installing XM 500 Module

- 1) Locate and clean the location for the XM 500 (module) next to the fuse box (pictured below). The plugs on the module need to face the rear of the chopper.
- 2) Place 4 dots of adhesive (supplied with kit) onto the flathead of the bolts on the bottom side of the module.
- 3) Carefully place the module onto the clean location previously selected and hold in place for 20 seconds.

Module mounted in cabinet



# Scherer



**Design Engineering, Inc.**  
**Tea, SD**

## 3) Installing display and wire harness

### Pillar mount option



- 1) Decide if you would like to mount the display on the window with the suction mount or fixed onto the pillar.
- 2) For suction mount please refer to instructions provided with the mount for proper attachment. Attach the display to the suction base using the mounting arm. Alcohol wipes are included to clean the window prior to attaching.
- 3) For pillar mount first attach the 4 hole mounting base to the display with the mounting arm and choose the best location for your operation. Use the 4 hole mounting base as a template to mark out the location and attach the base with the provided screws. No pre-drilling is necessary.

### Suction Mount



- 4) Depending on mounting location choose the best routing to run the cable back to the power accessory ports. Adhesive backed cable clamps are provided to secure the cable along the pillar. Use alcohol wipes to clean surface before applying clamps.
- 5) Route the harness by running both the grey and black 12 pin connectors through the electric cabinet down to the XM 500 module.
- 6) Attach black and grey 12 pin connectors to their respective ports on the module. They are keyed to only install one way.

### 5 pin cable attached to feed-thru



- 7) Attach the grey 5 pin and 8 pin cords to their respective feed-thru plugs.
- 8) Plug the power cord into the switched port on the back pillar of the cab.
- 9) Run the display cable up the back pillar along with the power cord and replace the lid to the electrical cabinet.



#### 4) Attach cords to sensors (exterior)

- 1) The Air monitoring cable (single plug) will attach to the 5-pin splitter (either port) on the firewall and terminate at the air pressure sensor on the Pneumatic belt tension system control. Be sure to secure the plug to the sensor with the screw to ensure connectivity.
- 2) The Oiler cable (double plug) will attach to the other port on the 5-pin splitter and attach to both sides of the processor oiler. The plug with 3 “U” shaped pins will attach to the power side of the oiler (left) and the plug with 2 “U” shaped pins will attach to the alarm side of the oiler (right). Again be sure to secure the plugs using the screws.
- 3) The Processor extension cable will attach to the 8-pin feed-thru on the firewall with the right-angled end terminating at the processor. Preferred routing of the cord may up to the oiler and then down along the oil line to the processor.
- 4) While the cord is attached to the processor mate the 2 protective caps together to reduce contamination.
- 5) Should you receive a reading of 1 degree for any bearing the system is not connected. Be sure all electrical connections are hand tight.



## Operation Notes

- 1) When powered up the Sentry will automatically display the 4 temps from the processor bearings. If the display has been switched to another mode simply enter the menu by pressing the left button on the display and scroll to select “4-up display” and select using the right button.
- 2) The Sentry is set up to have 2 levels of alarm: warning and shutdown.
- 3) Warnings will only provide an amber light on the left corner of the display and an alarm screen with a description of the alarm. Warnings include: bearing temps  $> 180$  but  $< 200$  degrees F, oil alarm  $< 10$  minutes. (to switch to degrees Celsius enter the menu screen by pressing the left button, scroll down to ‘Select Units’, press the right button, scroll down to ‘Metric BAR’. Press the right button to select, then press the left button twice to exit.)
- 4) Shutdown alarms will provide an alarm screen with a description of the alarm, a red light at the top right corner of the display, and an audible alarm. Shutdown alarms include: bearing temps  $> 200$  degrees F, oil alarm  $> 10$  minutes, system air pressure  $< 120$  PSI.
- 5) To silence the audible alarm depress the lit button next to the horn on top of the display. The audible alarm will be silenced for 5 minutes. If another alarm comes in during that 5 minutes you will not receive another audible alarm.
- 6) To clear the alarm screen so you can resume monitoring bearing temps press the right button on the display.

1-800-883-9790

After hours 605-201-1926

The initial start-up screen for the Scherer Sentry lists our after hours contact number should you need assistance.